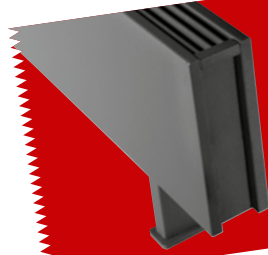




# jaga



## MINI FREESTANDING

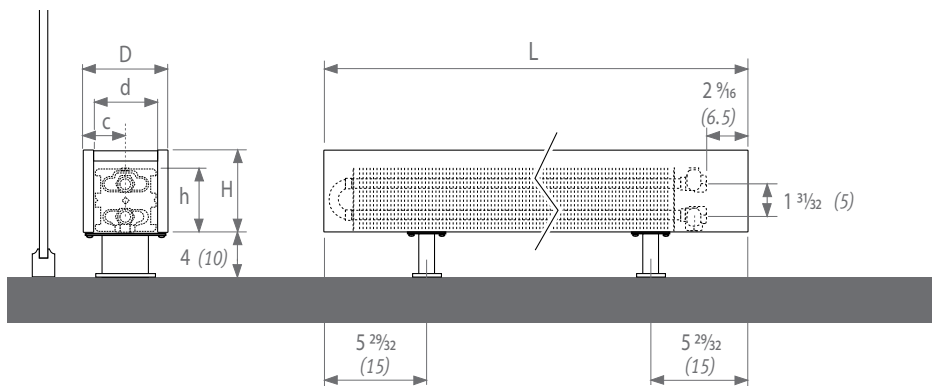
Dimensions & heat output

EN 442

LOW H<sub>2</sub>O

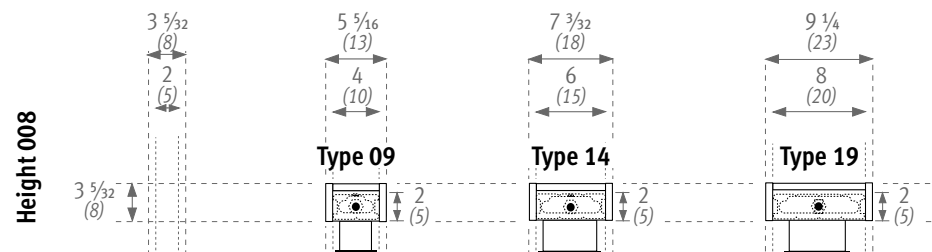
30 YEAR GUARANTEE FIN TUBE ELEMENT

### DIMENSIONS

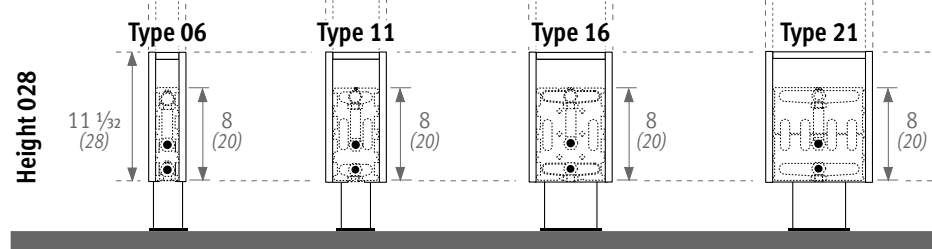
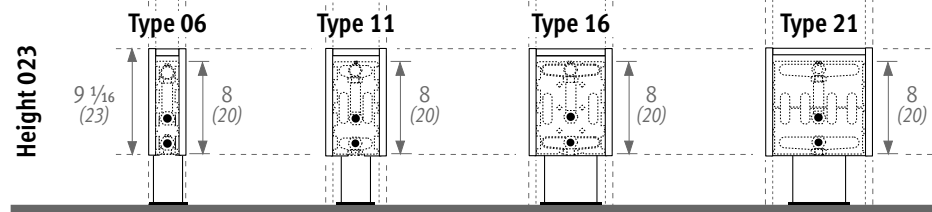
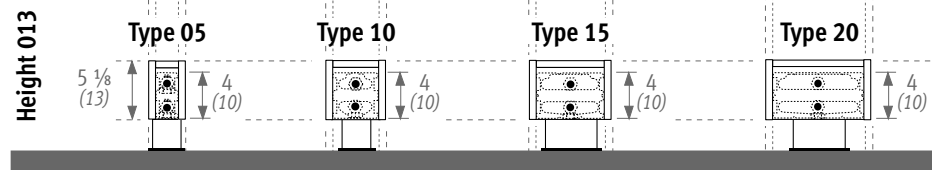


Type	d	h	D	c
09	3 15/16 (10)	1 31/32 (5)	5 1/8 (13)	2 9/16 (6.5)
14	5 29/32 (15)	1 31/32 (5)	7 3/32 (18)	3 35/64 (9)
19	7 7/8 (20)	1 31/32 (5)	9 1/16 (23)	4 17/32 (11.5)

Type	d	h	D	c
05	1 31/32 (5)	3 15/16 (10)	3 5/32 (8)	1 37/64 (4)
10	3 15/16 (10)	3 15/16 (10)	5 1/8 (13)	2 9/16 (6.5)
15	5 29/32 (15)	3 15/16 (10)	7 3/32 (18)	3 35/64 (9)
20	7 7/8 (20)	3 15/16 (10)	9 1/16 (23)	4 17/32 (11.5)



Type	d	h	D	c
06	1 31/32 (5)	7 7/8 (20)	3 5/32 (8)	1 37/64 (4)
11	3 15/16 (10)	7 7/8 (20)	5 1/8 (13)	2 9/16 (6.5)
16	5 29/32 (15)	7 7/8 (20)	7 3/32 (18)	3 35/64 (9)
21	7 7/8 (20)	7 7/8 (20)	9 1/16 (23)	4 17/32 (11.5)



Note: dimensions in “( )” are shown in centimeters.

The information in this technical brochure is correct at the time of printing. Jaga reserves the right to change product specification at any time in line with our policy of continuous improvement and innovation.

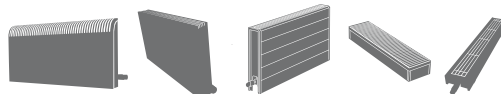


The dimensions shown in the tables have been rounded off to 0.5".  
Dimensions in cm are exact. (1 cm = 0.394")

		<b>MINI HEIGHT 008</b>																	
		ORDER CODE: MINF. 008 060 09. XXX /FM /00																	
mean T °F (°C)	H	Type	L 23.5" (060)	27.5" (070)	31.5" (080)	35.5" (090)	39.5" (100)	43.5" (110)	47" (120)	55" (140)	63" (160)	71" (180)	78.5" (200)	86.5" (220)	94.5" (240)	102.5" (260)	110" (280)	118" (300)	
170 (76.7)	<b>3"</b> (008)	<b>09</b>	1081	1264	1442	1625	1803	1985	2163	2524	2885	3245	3606	3967	4327	4688	5049	5409	
160 (71.1)				938	1097	1251	1410	1564	1723	1877	2190	2503	2816	3129	3442	3755	4068	4381	4694
<b>130 (54.4)</b>				<b>548</b>	<b>640</b>	<b>730</b>	<b>823</b>	<b>913</b>	<b>1005</b>	<b>1096</b>	<b>1278</b>	<b>1461</b>	<b>1644</b>	<b>1827</b>	<b>2009</b>	<b>2192</b>	<b>2375</b>	<b>2557</b>	<b>2740</b>
<b>110 (43.3)</b>				<b>325</b>	<b>380</b>	<b>433</b>	<b>488</b>	<b>542</b>	<b>597</b>	<b>650</b>	<b>759</b>	<b>867</b>	<b>976</b>	<b>1084</b>	<b>1193</b>	<b>1301</b>	<b>1410</b>	<b>1518</b>	<b>1627</b>
170 (76.7)	<b>14</b>		1765	2062	2354	2651	2944	3237	3534	4124	4709	5299	5889	6479	7069	7654	8244	8834	
160 (71.1)				1531	1789	2043	2301	2555	2809	3066	3578	4086	4598	5110	5621	6133	6641	7153	7665
<b>130 (54.4)</b>				<b>894</b>	<b>1044</b>	<b>1193</b>	<b>1343</b>	<b>1491</b>	<b>1640</b>	<b>1790</b>	<b>2089</b>	<b>2386</b>	<b>2684</b>	<b>2983</b>	<b>3282</b>	<b>3581</b>	<b>3877</b>	<b>4176</b>	<b>4475</b>
<b>110 (43.3)</b>				<b>530</b>	<b>620</b>	<b>708</b>	<b>797</b>	<b>885</b>	<b>973</b>	<b>1063</b>	<b>1240</b>	<b>1416</b>	<b>1593</b>	<b>1771</b>	<b>1948</b>	<b>2126</b>	<b>2302</b>	<b>2479</b>	<b>2656</b>
170 (76.7)	<b>19</b>		2427	2830	3233	3640	4043	4446	4854	5660	6470	7276	8087	8897	9704	10514	11320	12131	
160 (71.1)				2105	2455	2805	3158	3508	3858	4211	4911	5614	6314	7017	7720	8420	9123	9822	10526
<b>130 (54.4)</b>				<b>1229</b>	<b>1433</b>	<b>1637</b>	<b>1844</b>	<b>2048</b>	<b>2252</b>	<b>2459</b>	<b>2867</b>	<b>3278</b>	<b>3686</b>	<b>4097</b>	<b>4507</b>	<b>4916</b>	<b>5326</b>	<b>5735</b>	<b>6145</b>
<b>110 (43.3)</b>				<b>729</b>	<b>851</b>	<b>972</b>	<b>1094</b>	<b>1216</b>	<b>1337</b>	<b>1459</b>	<b>1702</b>	<b>1946</b>	<b>2188</b>	<b>2432</b>	<b>2676</b>	<b>2918</b>	<b>3162</b>	<b>3404</b>	<b>3648</b>

		<b>MINI HEIGHT 013</b>																	
		ORDER CODE: MINF. 013 060 05. XXX /FM /00																	
mean T °F (°C)	H	Type	L 23.5" (060)	27.5" (070)	31.5" (080)	35.5" (090)	39.5" (100)	43.5" (110)	47" (120)	55" (140)	63" (160)	71" (180)	78.5" (200)	86.5" (220)	94.5" (240)	102.5" (260)	110" (280)	118" (300)	
170 (76.7)	<b>5"</b> (013)	<b>05</b>	835	975	1115	1254	1394	1534	1674	1954	2230	2509	2789	3069	3349	3625	3904	4184	
160 (71.1)				725	846	968	1089	1210	1332	1453	1696	1936	2178	2421	2664	2907	3147	3389	3632
<b>130 (54.4)</b>				<b>424</b>	<b>495</b>	<b>566</b>	<b>637</b>	<b>708</b>	<b>779</b>	<b>850</b>	<b>992</b>	<b>1132</b>	<b>1274</b>	<b>1416</b>	<b>1558</b>	<b>1700</b>	<b>1840</b>	<b>1982</b>	<b>2125</b>
<b>110 (43.3)</b>				<b>252</b>	<b>294</b>	<b>336</b>	<b>379</b>	<b>421</b>	<b>463</b>	<b>505</b>	<b>590</b>	<b>673</b>	<b>758</b>	<b>842</b>	<b>927</b>	<b>1011</b>	<b>1094</b>	<b>1179</b>	<b>1263</b>
170 (76.7)	<b>10</b>		1285	1502	1714	1930	2143	2359	2571	3000	3428	3857	4286	4714	5143	5572	6000	6429	
160 (71.1)				1115	1303	1487	1675	1859	2047	2231	2603	2974	3346	3718	4090	4462	4834	5206	5578
<b>130 (54.4)</b>				<b>651</b>	<b>760</b>	<b>868</b>	<b>977</b>	<b>1085</b>	<b>1194</b>	<b>1302</b>	<b>1519</b>	<b>1736</b>	<b>1953</b>	<b>2170</b>	<b>2387</b>	<b>2604</b>	<b>2821</b>	<b>3038</b>	<b>3255</b>
<b>110 (43.3)</b>				<b>386</b>	<b>451</b>	<b>515</b>	<b>580</b>	<b>643</b>	<b>709</b>	<b>772</b>	<b>901</b>	<b>1030</b>	<b>1159</b>	<b>1287</b>	<b>1416</b>	<b>1545</b>	<b>1674</b>	<b>1803</b>	<b>1931</b>
170 (76.7)	<b>15</b>		2154	2515	2875	3232	3592	3953	4309	5030	5747	6468	7185	7902	8623	9340	10061	10778	
160 (71.1)				1870	2183	2495	2805	3118	3430	3740	4366	4988	5614	6236	6858	7484	8106	8732	9354
<b>130 (54.4)</b>				<b>1092</b>	<b>1275</b>	<b>1458</b>	<b>1639</b>	<b>1821</b>	<b>2004</b>	<b>2185</b>	<b>2551</b>	<b>2914</b>	<b>3280</b>	<b>3643</b>	<b>4007</b>	<b>4372</b>	<b>4736</b>	<b>5102</b>	<b>5465</b>
<b>110 (43.3)</b>				<b>649</b>	<b>757</b>	<b>866</b>	<b>973</b>	<b>1082</b>	<b>1191</b>	<b>1298</b>	<b>1515</b>	<b>1731</b>	<b>1948</b>	<b>2164</b>	<b>2380</b>	<b>2597</b>	<b>2813</b>	<b>3031</b>	<b>3247</b>
170 (76.7)	<b>20</b>		3041	3550	4055	4564	5068	5577	6082	7096	8110	9124	10137	11151	12165	13179	14193	15206	
160 (71.1)				2639	3081	3519	3961	4399	4840	5279	6158	7038	7918	8798	9678	10558	11437	12317	13197
<b>130 (54.4)</b>				<b>1542</b>	<b>1800</b>	<b>2056</b>	<b>2314</b>	<b>2570</b>	<b>2828</b>	<b>3084</b>	<b>3598</b>	<b>4112</b>	<b>4626</b>	<b>5140</b>	<b>5654</b>	<b>6168</b>	<b>6683</b>	<b>7197</b>	<b>7711</b>
<b>110 (43.3)</b>				<b>916</b>	<b>1069</b>	<b>1221</b>	<b>1375</b>	<b>1527</b>	<b>1680</b>	<b>1832</b>	<b>2137</b>	<b>2443</b>	<b>2748</b>	<b>3054</b>	<b>3359</b>	<b>3665</b>	<b>3970</b>	<b>4275</b>	<b>4581</b>

BTU/hr with 65°F (18.3°C) entering air and 1 GPM flow rate





The dimensions shown in the tables have been rounded off to 0.5".  
Dimensions in cm are exact. (1 cm = 0.394")

mean T °F (°C)		MINI HEIGHT 023																
		H	Type	L 23.5" (060)	27.5" (070)	31.5" (080)	35.5" (090)	39.5" (100)	43.5" (110)	47" (120)	55" (140)	63" (160)	71" (180)	78.5" (200)	86.5" (220)	94.5" (240)	102.5" (260)	110" (280)
170 (76.7)	<b>9"</b> (023)	<b>06</b>	1369	1597	1826	2055	2284	2513	2742	3200	3653	4111	4569	5026	5484	5938	6395	6853
160 (71.1)			1188	1387	1586	1784	1983	2182	2381	2778	3172	3569	3967	4364	4762	5156	5553	5951
<b>130 (54.4)</b>			<b>695</b>	<b>812</b>	<b>928</b>	<b>1044</b>	<b>1161</b>	<b>1277</b>	<b>1393</b>	<b>1626</b>	<b>1857</b>	<b>2089</b>	<b>2322</b>	<b>2555</b>	<b>2787</b>	<b>3018</b>	<b>3251</b>	<b>3483</b>
<b>110 (43.3)</b>			<b>414</b>	<b>483</b>	<b>552</b>	<b>621</b>	<b>691</b>	<b>760</b>	<b>829</b>	<b>968</b>	<b>1105</b>	<b>1243</b>	<b>1382</b>	<b>1520</b>	<b>1659</b>	<b>1796</b>	<b>1935</b>	<b>2073</b>
170 (76.7)	<b>11</b>		2559	2984	3415	3840	4266	4692	5118	5974	6825	7681	8533	9385	10240	11092	11948	12800
160 (71.1)			2215	2584	2956	3325	3693	4062	4430	5171	5909	6650	7387	8124	8865	9602	10343	11081
<b>130 (54.4)</b>			<b>1282</b>	<b>1495</b>	<b>1711</b>	<b>1924</b>	<b>2137</b>	<b>2351</b>	<b>2564</b>	<b>2993</b>	<b>3420</b>	<b>3848</b>	<b>4275</b>	<b>4702</b>	<b>5131</b>	<b>5557</b>	<b>5986</b>	<b>6413</b>
<b>110 (43.3)</b>			<b>754</b>	<b>880</b>	<b>1007</b>	<b>1132</b>	<b>1258</b>	<b>1384</b>	<b>1509</b>	<b>1762</b>	<b>2013</b>	<b>2265</b>	<b>2516</b>	<b>2768</b>	<b>3020</b>	<b>3271</b>	<b>3524</b>	<b>3775</b>
170 (76.7)	<b>16</b>		3348	3907	4462	5021	5580	6138	6697	7811	8928	10042	11160	12277	13391	14508	15622	16740
160 (71.1)			2895	3378	3858	4341	4824	5308	5791	6753	7720	8683	9649	10616	11578	12545	13507	14474
<b>130 (54.4)</b>			<b>1668</b>	<b>1946</b>	<b>2222</b>	<b>2501</b>	<b>2779</b>	<b>3058</b>	<b>3336</b>	<b>3891</b>	<b>4448</b>	<b>5002</b>	<b>5559</b>	<b>6116</b>	<b>6671</b>	<b>7227</b>	<b>7782</b>	<b>8339</b>
<b>110 (43.3)</b>			<b>977</b>	<b>1140</b>	<b>1302</b>	<b>1466</b>	<b>1629</b>	<b>1792</b>	<b>1955</b>	<b>2280</b>	<b>2606</b>	<b>2932</b>	<b>3258</b>	<b>3584</b>	<b>3909</b>	<b>4236</b>	<b>4561</b>	<b>4887</b>
170 (76.7)	<b>21</b>		4362	5088	5815	6541	7267	7994	8720	10173	11630	13082	14535	15988	17440	18897	20350	21803
160 (71.1)			3768	4395	5023	5650	6277	6905	7532	8787	10046	11300	12555	13810	15065	16323	17578	18833
<b>130 (54.4)</b>			<b>2162</b>	<b>2522</b>	<b>2883</b>	<b>3243</b>	<b>3603</b>	<b>3963</b>	<b>4323</b>	<b>5043</b>	<b>5766</b>	<b>6486</b>	<b>7206</b>	<b>7926</b>	<b>8646</b>	<b>9369</b>	<b>10089</b>	<b>10809</b>
<b>110 (43.3)</b>			<b>1262</b>	<b>1473</b>	<b>1683</b>	<b>1893</b>	<b>2104</b>	<b>2314</b>	<b>2524</b>	<b>2945</b>	<b>3366</b>	<b>3787</b>	<b>4208</b>	<b>4628</b>	<b>5049</b>	<b>5470</b>	<b>5891</b>	<b>6312</b>

mean T °F (°C)		MINI HEIGHT 028																
		H	Type	L 23.5" (060)	27.5" (070)	31.5" (080)	35.5" (090)	39.5" (100)	43.5" (110)	47" (120)	55" (140)	63" (160)	71" (180)	78.5" (200)	86.5" (220)	94.5" (240)	102.5" (260)	110" (280)
170 (76.7)	<b>9"</b> (023)	<b>06</b>	1440	1680		2160	2400	2640	2880	3360	3840	4320	4800	5280	5760	6240	6720	7200
160 (71.1)			1265	1476		1897	2108	2319	2530	2951	3373	3794	4216	4638	5059	5481	5902	6324
<b>130 (54.4)</b>			<b>742</b>	<b>865</b>		<b>1112</b>	<b>1236</b>	<b>1360</b>	<b>1483</b>	<b>1730</b>	<b>1978</b>	<b>2225</b>	<b>2472</b>	<b>2719</b>	<b>2966</b>	<b>3214</b>	<b>3461</b>	<b>3708</b>
<b>110 (43.3)</b>			<b>443</b>	<b>517</b>		<b>664</b>	<b>738</b>	<b>812</b>	<b>886</b>	<b>1033</b>	<b>1181</b>	<b>1328</b>	<b>1476</b>	<b>1624</b>	<b>1771</b>	<b>1919</b>	<b>2066</b>	<b>2214</b>
170 (76.7)	<b>11</b>		2797	3263		4195	4661	5127	5593	6525	7458	8390	9322	10254	11186	12119	13051	13983
160 (71.1)			2420	2824		3631	4034	4437	4841	5648	6454	7261	8068	8875	9682	10488	11295	12102
<b>130 (54.4)</b>			<b>1402</b>	<b>1635</b>		<b>2102</b>	<b>2336</b>	<b>2570</b>	<b>2803</b>	<b>3270</b>	<b>3738</b>	<b>4205</b>	<b>4672</b>	<b>5139</b>	<b>5606</b>	<b>6074</b>	<b>6541</b>	<b>7008</b>
<b>110 (43.3)</b>			<b>824</b>	<b>961</b>		<b>1236</b>	<b>1373</b>	<b>1510</b>	<b>1648</b>	<b>1922</b>	<b>2197</b>	<b>2471</b>	<b>2746</b>	<b>3021</b>	<b>3295</b>	<b>3570</b>	<b>3844</b>	<b>4119</b>
170 (76.7)	<b>16</b>		3686	4301		5530	6144	6758	7373	8602	9830	11059	12288	13517	14746	15974	17203	18432
160 (71.1)			3188	3720		4783	5314	5845	6377	7440	8502	9565	10628	11691	12754	13816	14879	15942
<b>130 (54.4)</b>			<b>1835</b>	<b>2141</b>		<b>2753</b>	<b>3059</b>	<b>3365</b>	<b>3671</b>	<b>4283</b>	<b>4894</b>	<b>5506</b>	<b>6118</b>	<b>6730</b>	<b>7342</b>	<b>7953</b>	<b>8565</b>	<b>9177</b>
<b>110 (43.3)</b>			<b>1075</b>	<b>1254</b>		<b>1613</b>	<b>1792</b>	<b>1971</b>	<b>2150</b>	<b>2509</b>	<b>2867</b>	<b>3226</b>	<b>3584</b>	<b>3942</b>	<b>4301</b>	<b>4659</b>	<b>5018</b>	<b>5376</b>
170 (76.7)	<b>21</b>		4845	5653		7268	8075	8883	9690	11305	12920	14535	16150	17765	19380	20995	22610	24225
160 (71.1)			4184	4882		6277	6974	7671	8369	9764	11158	12553	13948	15343	16738	18132	19527	20922
<b>130 (54.4)</b>			<b>2395</b>	<b>2794</b>		<b>3593</b>	<b>3992</b>	<b>4391</b>	<b>4790</b>	<b>5589</b>	<b>6387</b>	<b>7186</b>	<b>7984</b>	<b>8782</b>	<b>9581</b>	<b>10379</b>	<b>11178</b>	<b>11976</b>
<b>110 (43.3)</b>			<b>1399</b>	<b>1632</b>		<b>2098</b>	<b>2331</b>	<b>2564</b>	<b>2797</b>	<b>3263</b>	<b>3730</b>	<b>4196</b>	<b>4662</b>	<b>5128</b>	<b>5594</b>	<b>6061</b>	<b>6527</b>	<b>6993</b>

BTU/hr with 65°F (18.3°C) entering air and 1 GPM flow rate

