



jaga

Energy
SAVERS
LOW-H₂O



MINI FREESTANDING
The most powerfull heat emitters for
condensing boilers and heat pumps

WWW.JAGA-USA.COM
WWW.JAGA-CANADA.COM





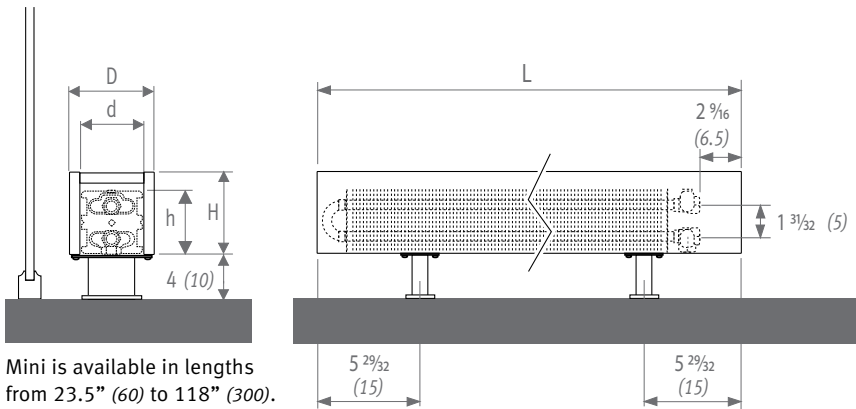
MINI
freestanding cabinet



MINI, STRIKINGLY DISCREET

Minimum dimensions, maximum warmth. Discreetly hidden it is able to convert the chilly air near a window into pleasant heat. Extremely suited for spaces with full height glazing, for window displays, winter gardens and under window seats. Starts at 3" (8) height.

DIMENSIONS



Mini is available in lengths from 23.5" (60) to 118" (300).

OUTPUT

H	Type	d	h	D	
3 5/16 (08)	09	4 (10)	2 (5)	5 1/8 (13)	477
	14	6 (15)	2 (5)	7 3/32 (18)	780
	19	8 (20)	2 (5)	9 1/16 (23)	1071
5 1/8 (13)	05	2 (5)	4 (10)	3 5/32 (8)	370
	10	4 (10)	4 (10)	5 1/8 (13)	567
	15	6 (15)	4 (10)	7 3/32 (18)	951
	20	8 (20)	4 (10)	9 1/16 (23)	1342

H	Type	d	h	D	
9 1/16 (23)	06	2 (5)	8 (20)	3 5/32 (8)	605
	11	4 (10)	8 (20)	5 1/8 (13)	1127
	16	6 (15)	8 (20)	7 3/32 (18)	1472
	21	8 (20)	8 (20)	9 1/16 (23)	1916
11 1/32 (28)	06	2 (5)	8 (20)	3 5/32 (8)	640
	11	4 (10)	8 (20)	5 1/8 (13)	1230
	16	6 (15)	8 (20)	7 3/32 (18)	1620
	21	8 (20)	8 (20)	9 1/16 (23)	2126

Average output in BTU/h foot with 65°F (18.3°C) entering air and 1 GPM flow rate. Mean water temperature of 160°F (71.1°C).

THE MOST POWERFUL HEAT EMITTERS



Significant energy savings

The most efficient and modern fin tube element, that complies with actual AND future building standards and technologies.

For all low temperature hydronic systems

Perfectly suited for condensing boilers, heat pumps and solar systems.

The perfect partner for radiant heating

for improved temperature control and energy efficiency.

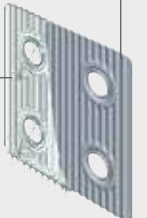
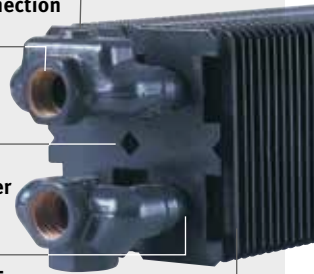
1/8" NPTF airvent connection

Brass collectors with 1/2" NPTF connections

With dirt-repellent and dust-proof lacquer in graphite grey

Up to 16 parallel copper tubes for the best heat emission

55 Corrugated aluminum fins per foot for super heat-output at low water temperatures



Note: dimensions in "()" are shown in centimeters.