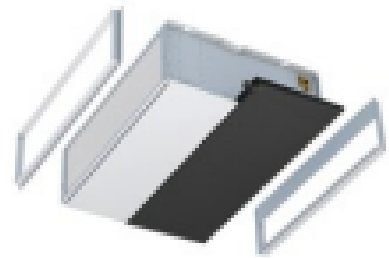
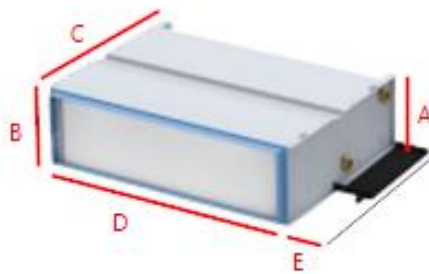
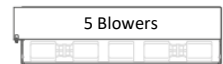
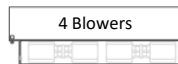
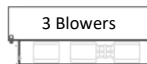
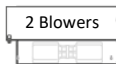


Jaga Horizontal Fan Coil

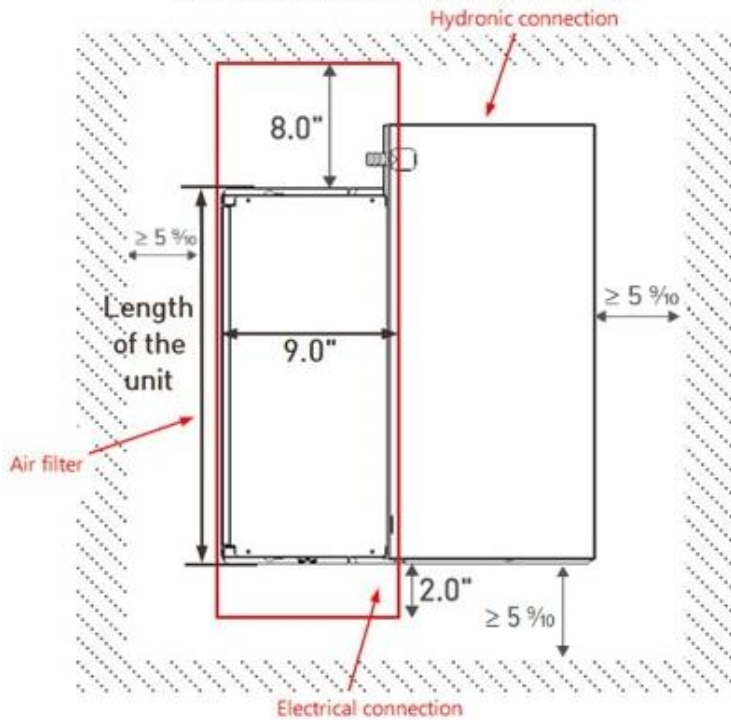
Briza 22 Built-in HP



	A	B	C	D	E
	8 3/4"	9 1/8"	27 1/2"	L	3 5/8"
Model	T3 / 75	T4 / 95	T6 / 125	T8 / 155	T10 / 190
L (inches)	43 1/4"	51 1/8"	63"	74 7/8"	88 9/16"
Weight (LBS)	47.7	59.5	78.3	97	123.5
Airflow (CFM)	600	750	800	1250	1450
Total cooling (Ton)	1	1.25	1.5	2.3	3.4



DIMENSIONS: MAINTENANCE OPENING



Notes:

All conditions above at 0.25 inches of water column (External Static Pressure), 45-55F chilled water.

Maintenance opening shown on the left for non-ducted return.

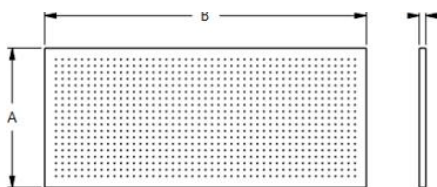
Fan requires 200-240V, 1Phase, 60Hz.

ETL listed. AHRI 260 rated.

Electrical connection can be on the same side as the Hydronic connection.

If so we can have a single access panel on the side of the unit: 24" x 24" (with a side filter access)

Air filter



All types available in MERV 4, 8 or 13 media



Air filter dimensions

Options: same side hydronic, same side electrical, disconnect switch, side filter removal

	A	B	C		
	8 7/16"	L	1" 2" or 4"		
L (inches)	T3 – 27 1/8"	T4 – 35 1/4"	T6 – 47 1/16"	T8 – 58 7/8"	T10 – 2x 35 1/4"