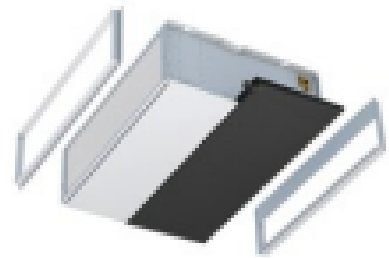
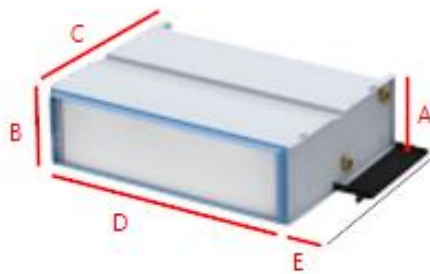
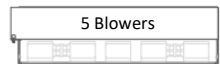
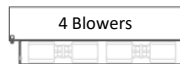
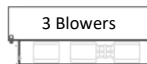
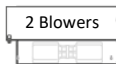


Jaga Horizontal Fan Coil

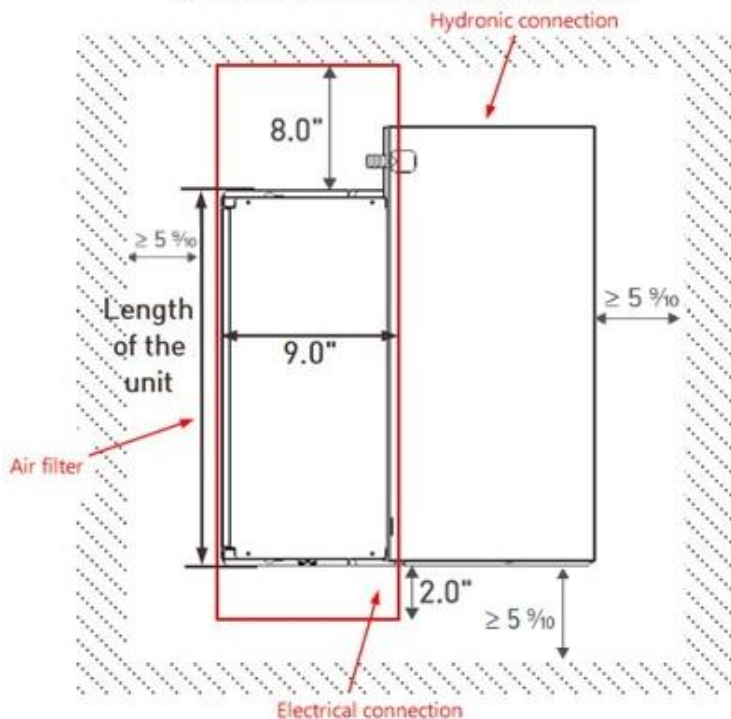
Briza 22 Built-in HP



| | A | B | C | D | E |
|---------------------|---------|---------|----------|----------|-----------|
| | 8 3/4" | 9 1/8" | 21 1/2" | L | 3 5/8" |
| Model | T3 / 75 | T4 / 95 | T6 / 125 | T8 / 155 | T10 / 190 |
| L (inches) | 43 1/4" | 51 1/8" | 63" | 74 7/8" | 88 9/16" |
| Weight (LBS) | 47.7 | 59.5 | 78.3 | 97 | 123.5 |
| Airflow (CFM) | 600 | 750 | 800 | 1250 | 1450 |
| Total cooling (Ton) | 1 | 1.25 | 1.5 | 2.3 | 3.4 |



DIMENSIONS: MAINTENANCE OPENING



Notes:

All conditions above at 0.25 inches of water column (External Static Pressure), 45-55F chilled water.

Maintenance opening shown on the left for non-ducted return.

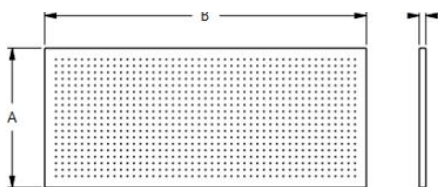
Fan requires 200-240V, 1Phase, 60Hz.

ETL listed. AHRI 260 rated.

Electrical connection can be on the same side as the Hydronic connection.

If so we can have a single access panel on the side of the unit: 24" x 24" (with a side filter access)

Air filter



All types available in MERV 4, 8 or 13 media



Air filter dimensions

Options: same side hydronic, same side electrical, disconnect switch, side filter removal

| | A | B | C | | |
|------------|--------------|--------------|---------------|--------------|------------------|
| | 8 7/16" | L | 1" 2" or 4" | | |
| L (inches) | T3 – 27 1/8" | T4 – 35 1/4" | T6 – 47 1/16" | T8 – 58 7/8" | T10 – 2x 35 1/4" |